

## Indications:

Management of moderate to heavily exuding partial to full thickness wounds including:

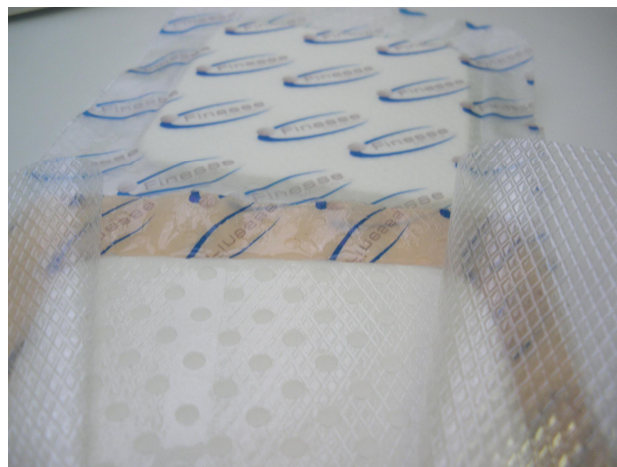
- É Venous and Arterial leg ulcers
- É Diabetic foot ulcers
- É Stage I . IV pressure ulcers
- É First/Second degree burns,
- É Traumatic wounds.

**Elta® Silfoam** is a cost effective silicone adhesive wound dressing

- É Available in 4mm & 6mm thickness
- É Excellent fluid handling capacity.
- É Bacteria & waterproof outer film



Elta® Silfoam pad

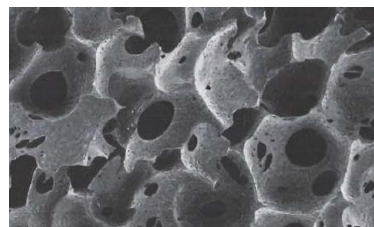


Perforated silicone layer

## Advantages

- É Excellent absorption
- É Painless on removal
- É Maintains moist wound
- É Optimal moisture vapour transmission
- É All over adhesive, long wear time & minimal patient trauma.
- É Visual control of exudates
- É High Fluid handling capacity
- É Cost efficient

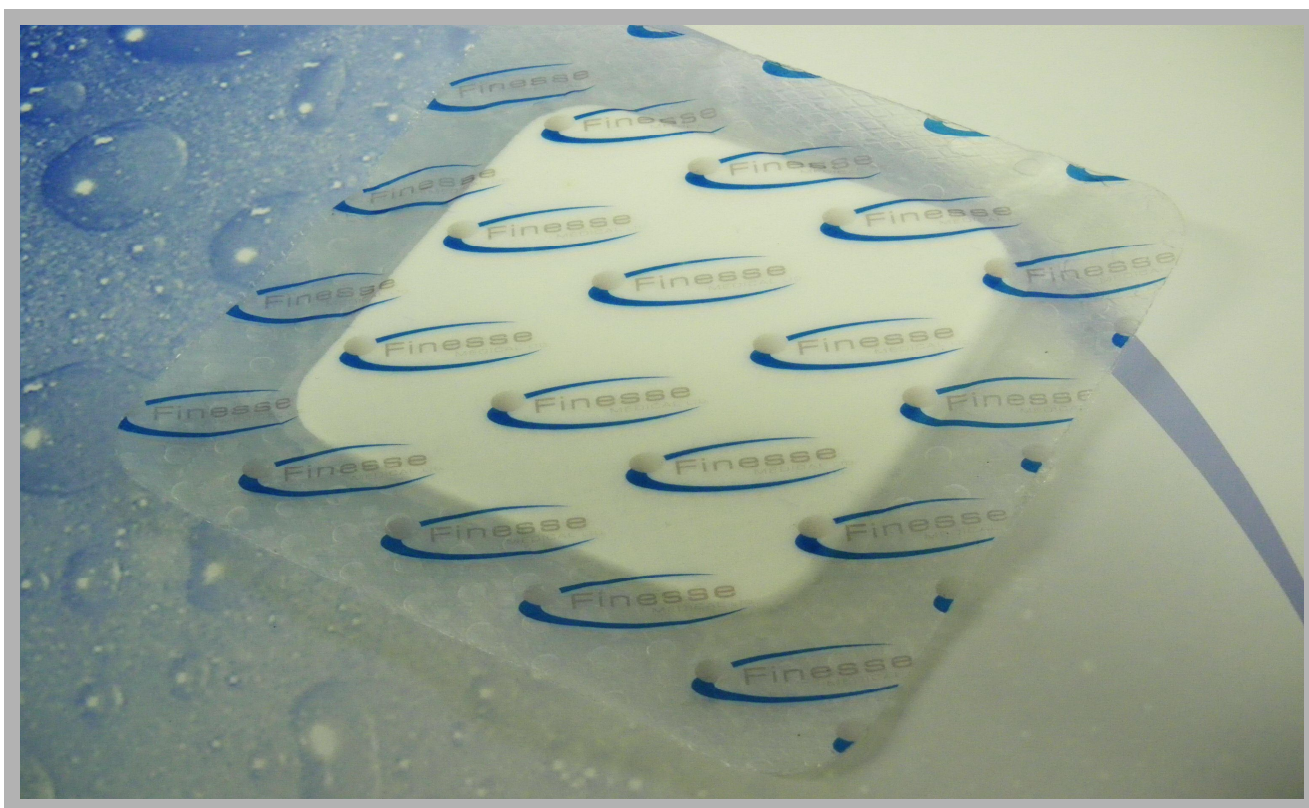
**New**



## Innovative Foam Design.

The polyurethane foam consists of open cell structures providing excellent absorption, while preventing granulation tissue from growing inside.

## Silicone adhesive coated polyurethane foam



**Elta®** SilFoam is an adherent silicone foam dressing consisting of 3 layers.

- É Adherent silicone layer which provides excellent bonding to the skin, long wear time & is painless on removal.
- É Hydrophilic polyurethane foam with high absorption capacity
- É Transparent polyurethane film which acts as a bacteria barrier while allowing optimal moisture vapour transmission.

**Elta®** SilFoam is available in a range of sizes, shapes and designs including:

- É Flat foam dressings
- É Border dressings.
- É Clear & skin coloured with printed polyurethane film branding.